



📍 The Beech, Plot 17 The Street, Hullavington, Wiltshire, SN15 6EF

🏠 £399,999

Strakers are excited to present Buckley Place, an impressive development of 3, 4 and 5-bedroom new houses in the beautiful Wiltshire village of Hullavington. Blending the best of rural tranquillity and modern convenience, Buckley Place is the perfect place to call home.

- Open plan kitchen and dining room
- French doors to rear garden
- Separate sitting room
- En-suite and built in wardrobe to bedroom 1
- Low cost energy efficient homes
- Wastewater heat recovery system for reduced energy bills
- 10 year NHBC Buildmark warranty
- Benefitting from an Air Source Heat Pump
- EV Chargers

🏠 Freehold

🏠 EPC Rating



The Beech is a fantastic three storey home created for those who want a balance between family time and quiet relaxation. Downstairs features a welcoming sitting room, open plan kitchen/dining room with French doors leading to the garden and handy cloakroom. Upstairs the first floor has two spacious bedrooms and an attractive family bathroom, while the second floor features a spacious double bedroom complete with ensuite and large wardrobe.

Acomodation

Ground floor

Kitchen / Dining Area

4.74 x 3.64 15' 7" x 11' 11"

Sitting Room

3.72 x 4.34 12' 2" x 14' 3"

First floor

Bedroom 2

4.05 x 2.66 13' 3" x 8' 9"

Bedroom 3

2.49 x 3.38 8' 2" x 11' 1"

Second floor

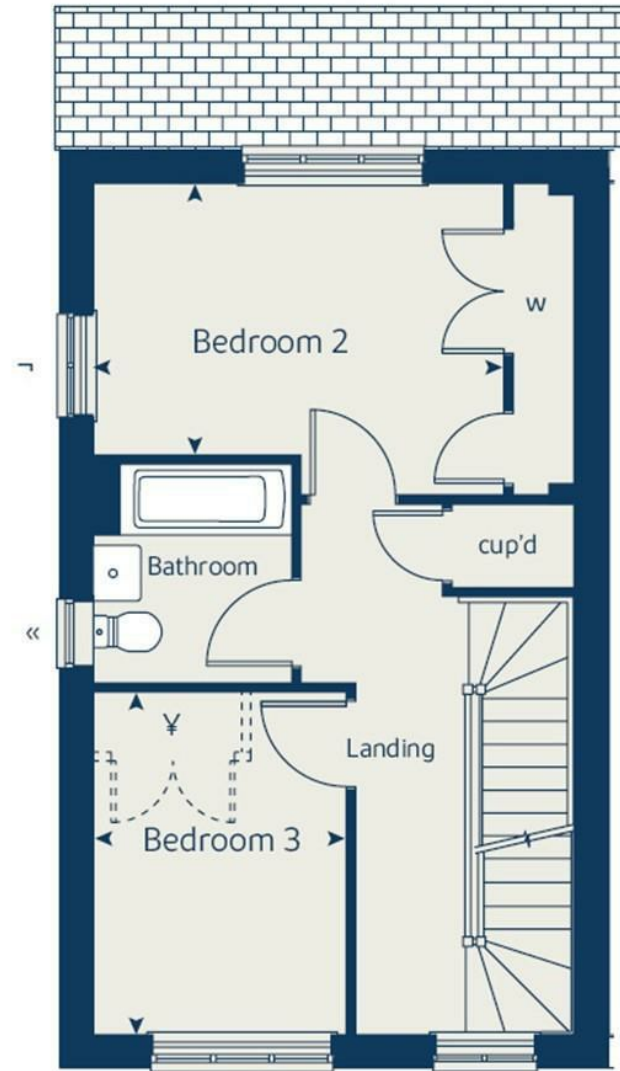
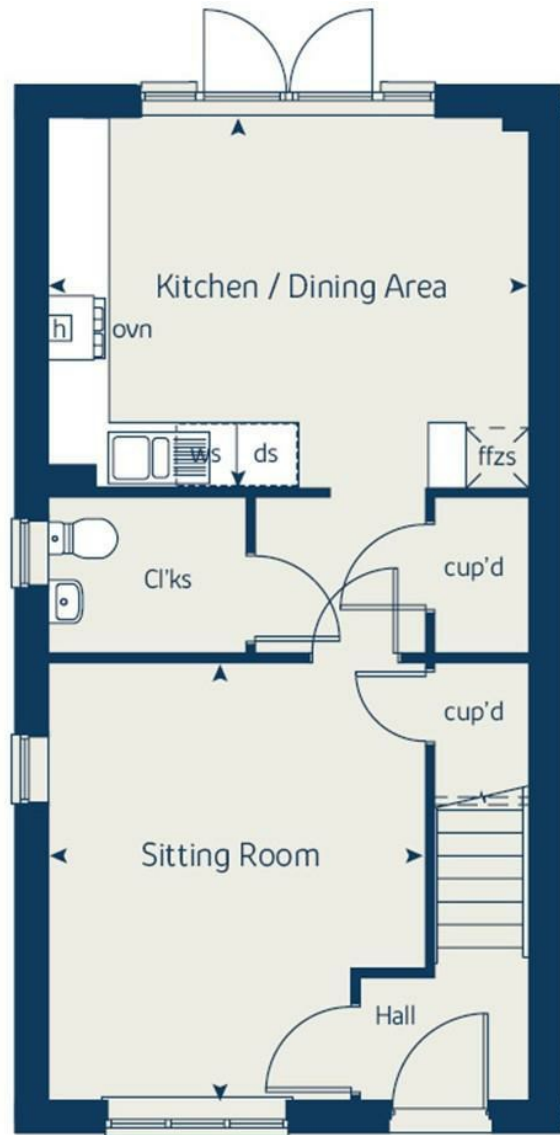
Bedroom 1

3.63 x 3.66 11' 11" x 12' 0"

Situation

Set on the edge of the picturesque Cotswolds, Hullavington has a warm village atmosphere where families, professionals and downsizers can enjoy a peaceful lifestyle. With excellent connections to the cities of Bristol, Swindon and Bath, this location balances charm and convenience. Just 15 minutes' drive from Chippenham Train Station, with regular direct services to London Paddington and Bristol.





Disclaimer These particulars, whilst believed to be accurate are set out as a general outline only for guidance and do not constitute any part of an offer or contract. Intending purchasers should not rely on them as statements of representation of fact, but must satisfy themselves by inspection or otherwise as to their accuracy. No person in this firm's employment has the authority to make or give any representation or warranty in respect of the property. All measurements and distances are approximate only. Your home is at risk if you do not keep up repayments on a mortgage or other loan secured on it.